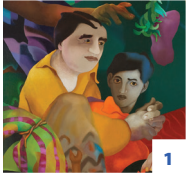


ART IN PUBLIC SPACES

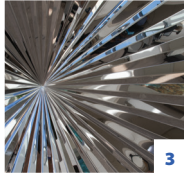
Explore historical and contemporary works from the PEM collection installed throughout the museum.



Family: Preparing for Departure
Ranbir Singh Kaleka
Ground Level



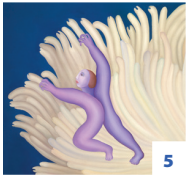
Willy
Deborah Butterfield
Ground Level



Halo
Anish Kapoor
Ground Level



Sea of Plenty
Roy Superior
Ground Level



Untitled
Manjit Bawa
Ground Level



Peace, Commerce, Prosperity
N. C. Wyeth
Ground Level, 2, 3



Jangseung (village guardians)
Korean artist
Ground Level



Pair of guardian lions
Chinese artist
Ground Level



Stool
Shi Jianmin
Ground Level



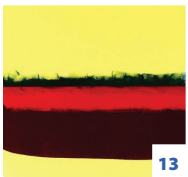
Painting and Vases
Michael Lin
Ground Level, 2, 3



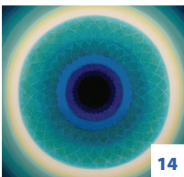
View of the foreign factories at Canton
Sunqua
Level 2



Kū
Hawaiian artist
Level 2



"Mayfair: Off Down to Blackie's (Black L) for Dave Stewart"
Robert MacPherson
Level 2



August '78
Biren De
Level 2



Island Bride
Brian White
Level 3



Shopping
Judith Lowry
Level 3



PEABODY ESSEX MUSEUM

Visitor Map

#newPEM



PEM



WELCOME TO THE PEABODY ESSEX MUSEUM

We are America's oldest continuously operating museum, established in 1799 in Salem.

Our seafaring founders developed trading relationships in the Americas, Africa, Asia, and the Pacific Rim. They were also some of the country's earliest collectors, who created a museum to share diverse objects of art and culture as expressions of the larger world.

Today, we are a much-expanded museum that also includes many historic properties and gardens in Salem, the Collection Center, the Phillips Library, and a vibrant online presence.

We invite you to explore local, regional, national, and global expressions of creativity and humanity through our collections, exhibitions, educational initiatives, interpretation, and programming.

Every visitor has a personal history and traditions, and we hope our museum stories intersect with yours in unexpected and exciting ways. Please share your experiences and ideas at #peabodyessex so we can learn and grow together.

Thank you for your time with us. Enjoy!

HELPFUL TIPS



Store coats, backpacks and umbrellas in the coatroom or lockers, at no charge.



Wheelchairs and strollers are available in the coatroom.



Eating or drinking is not allowed in galleries.



All restrooms have changing tables. There are two gender-neutral family restrooms on the Ground Level.



Non-flash photography is encouraged unless otherwise noted. Use of tripods and selfie sticks are not permitted.



You are welcome to draw with a pencil in the galleries unless otherwise noted.

HOURS

Open Tuesday–Sunday, 10 am–5 pm
Closed Mondays (except holidays)
Closed Thanksgiving, Christmas
and New Year's Day

PARKING

Parking is available in the paid garage on New Liberty Street, just a short walk from the museum entrance.

VISIT

Free for Salem residents, members, children 16 and under and active-duty, National Guard and Reserve military

Adults \$20, seniors \$18, students \$12

Admission to the Main Atrium and Museum Shop is free

TOUR

Free guided tours of galleries and historic houses are offered daily. Stop by the information desk to speak with a staff member. *Subject to availability.*

YIN YU TANG HOUSE

Admission is \$6. Free audioguides are available at information desk. The house has limited wheelchair access. Strollers are not allowed inside; please check at coatroom.

EAT

The Café offers a variety of soups, sandwiches and salads, along with several gluten-free and child-friendly options. The Café also offers daily specials as well as beer and wine. Members get a 10 percent discount.

SHOP

The Museum Shop offers an extensive selection of carefully curated merchandise. Members get a 10 percent discount.

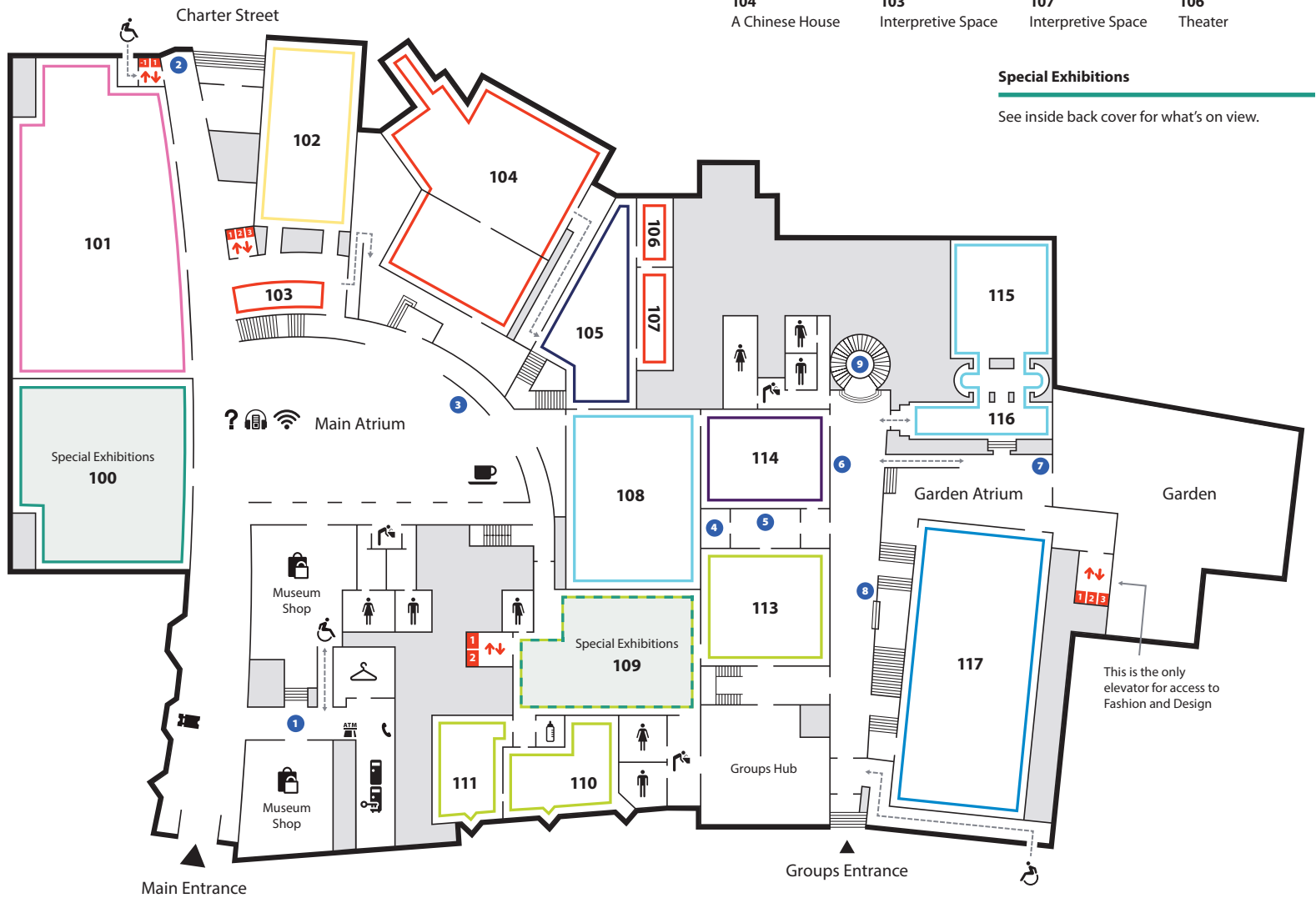
ACCESSIBILITY

The museum is wheelchair accessible; the historic houses are not. Service dogs are welcome.

Ground Level

MAP KEY

- Special Exhibitions
- Art in Public Spaces
- Accessible Route
- Admissions
- ATM
- Café
- Coatroom
- Elevator
- Information Desk
- Lockers
- Nursing Room
- Restroom
- Shop
- Stairs
- Telephone
- Water Fountain
- Wi-Fi
- Yin Yu Tang Audioguides



Yin Yu Tang



104
A Chinese House



103
Interpretive Space



107
Interpretive Space



106
Theater

Special Exhibitions

See inside back cover for what's on view.

American



101

Art & Nature Center



109
Special Exhibitions



113
The Pod



110, 111
Create Space
Studio 1, Studio 2

Auditorium



102

Chinese



105
Double Happiness:
Celebration in
Chinese Art

Contemporary



108
Kimsooja:
Archive of Mind



115, 116
Vanessa Platadis:
Taking Place

Powerful Figures



114

Maritime

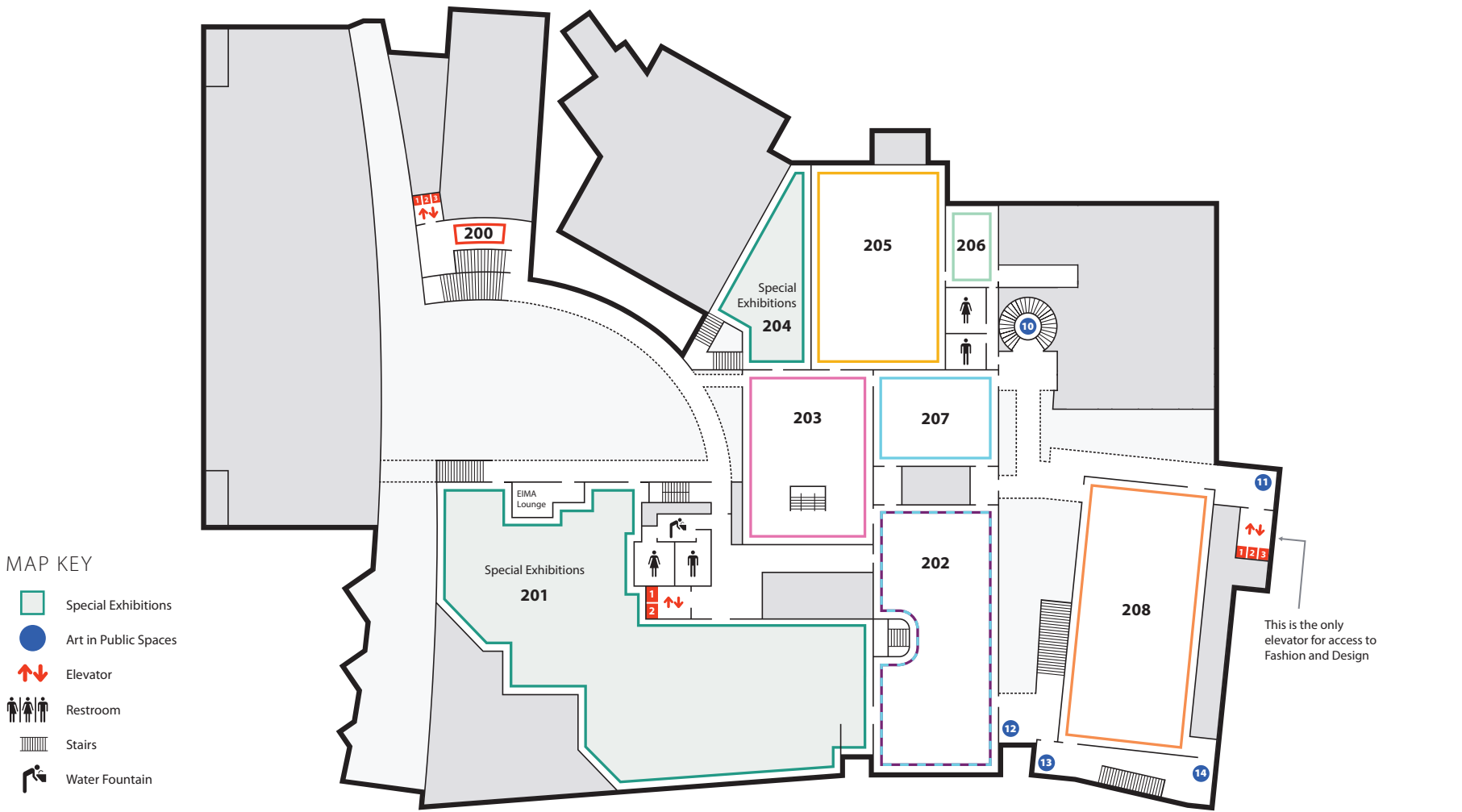





117



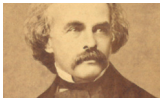

Level 2

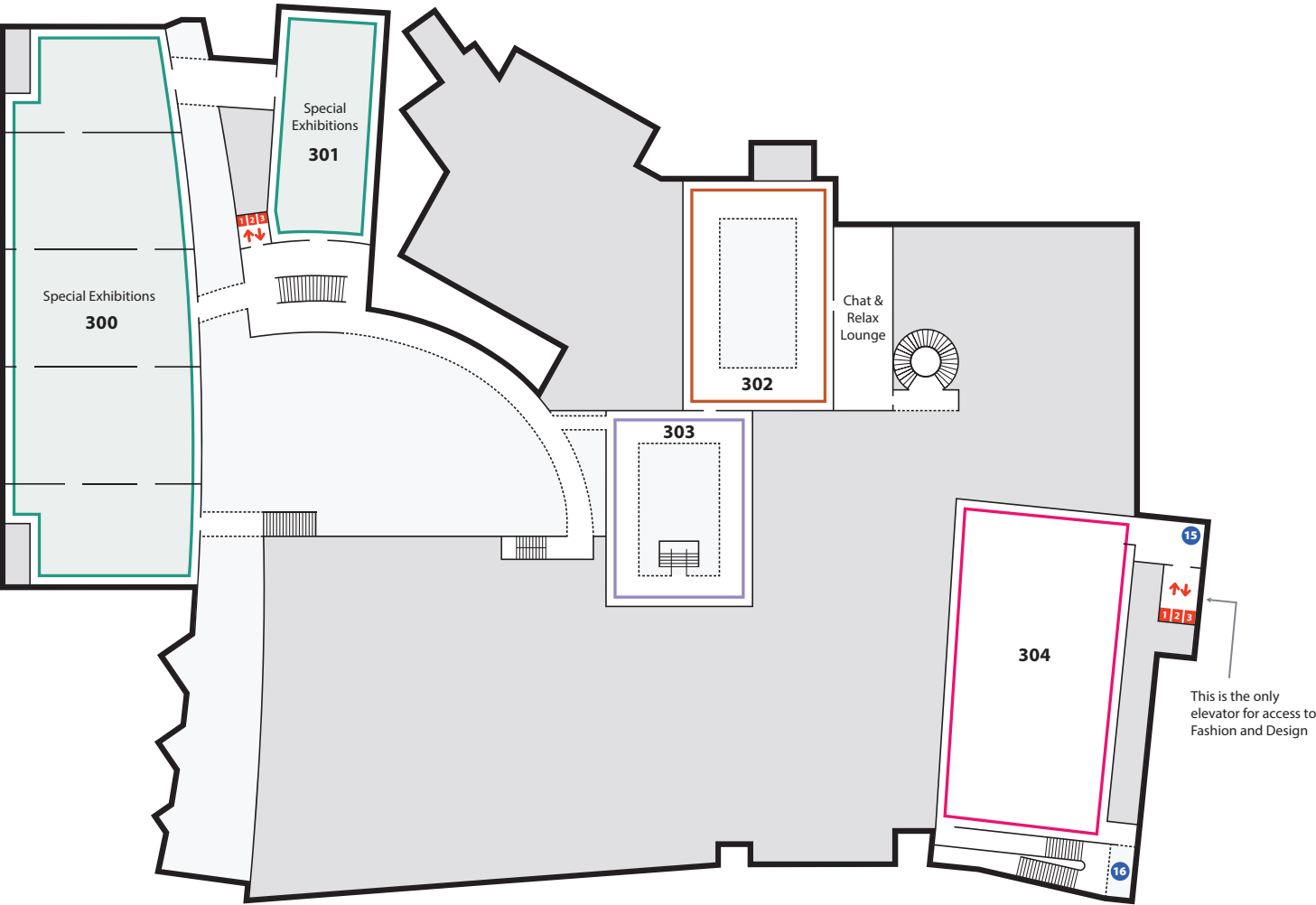
Special Exhibitions

See inside back cover for what's on view.



American	East India Marine Hall	Contemporary
		
203	202	202
	Charles Sandison: Figurehead 2.0	Yoan Capote: Immanence

Yin Yu Tang	Japanese	Phillips Library Gallery	Asian Export
			
200	205	206	208
Interpretive Space		The Creative Legacy of Nathaniel Hawthorne	



MAP KEY

- Special Exhibitions
- Art in Public Spaces
- Elevator
- Stairs

Japanese Export



302
Japanomania!
Japanese Art
Goes Global

Indian



303
MegaCity: India's
Culture of the Streets

Fashion and Design








304

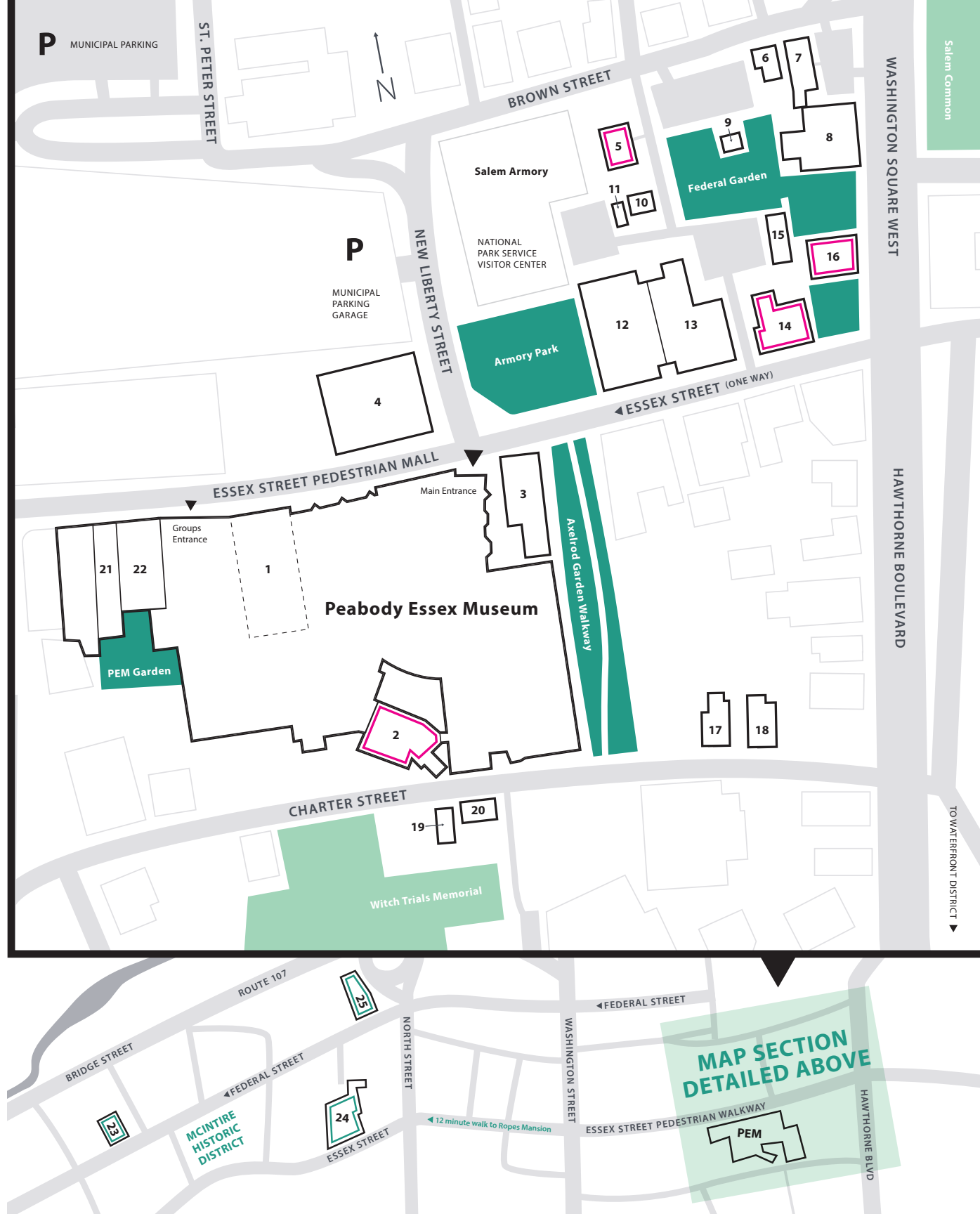
Campus

BUILDINGS

- 1 East India Marine Hall
- 2 Yin Yu Tang House
- 3 PEM Connect Building
- 4 Museum Office Center
- 5 John Ward House
- 6 Daniel Bray House
- 7 Andrew-Safford Carriage House
- 8 Andrew-Safford House
- 9 Derby-Beebe Summer House
- 10 First Quaker Meeting House
- 11 Lye-Tapley Shoe Shop
- 12 Plummer Hall
- 13 John Tucker Daland House
- 14 Gardner-Pingree House
- 15 Gardner-Pingree Carriage House
- 16 Crowninshield-Bentley House
- 17 Vilate Young House
- 18 Gilbert Chadwick House
- 19 Summer School Building
- 20 Samuel Pickman House
- 21, 22 Museum Staff Offices
- 23 Cotting-Smith Assembly House, Carriage House and Garden
- 24 Ropes Mansion, Garden, and Greenhouse
- 25 Peirce-Nichols House, Carriage House and Garden

MAP KEY

-  PEM Building
-  Accessible through guided tour
-  PEM Building and Garden
-  PEM Garden or Park
-  City of Salem Public Space



FEATURES

ART & NATURE CENTER

Designed for visitors of all ages, our family-friendly center features changing exhibitions, hands-on displays and art-making spaces.

GARDEN

Our intimate museum garden features unique water fountains and plantings with inviting places to sit, relax and contemplate.

YIN YU TANG: A CHINESE HOUSE

Originally located in southeastern China, this late Qing dynasty residence was dismantled, conserved and reassembled at the museum. The stately 16-bedroom home offers unprecedented insights into Chinese art, architecture and culture, as well as two centuries of daily family life. Same-day timed tickets and audioguides are available at the admissions desk.

HISTORIC HOUSES

Experience three centuries of New England life, art and architecture. Highlights include the John Ward House (about 1684), one of the finest surviving 17th-century buildings in New England; the Crowninshield-Bentley House (about 1727), an example of Georgian Colonial architecture; the Ropes Mansion (about 1727), home to four generations of the Ropes family; and the stately Gardner-Pingree House (1804), home to wealthy sea captains.

Tickets for house tours are available at the admissions desk. No tickets required for self-guided tours of Ropes Mansion, open Saturdays and Sundays, noon–4 pm, Memorial Day through October. We encourage you to explore Ropes Mansion Garden, open 365 days a year from dawn to dusk.

PHILLIPS LIBRARY

The library is located at 306 Newburyport Turnpike in Rowley. It is free and open to researchers of all ages and levels of interest in our collections.

Drop-in hours: Tuesday–Thursday 10 am–4 pm and Saturday 9 am–1 pm. By appointment, Mondays and Fridays, 10 am–4 pm. Closed for major holidays. Visit pem.org/library, email research@pem.org or call 978-745-9500, ext. 3053.

GROUP TOURS

The museum welcomes groups of all ages at reduced rates for a minimum of 10 people. Visit pem.org/grouptours or call 978-542-1514.

SCHOOL GROUPS

Tours are designed to promote discovery and foster critical and creative thinking. Groups in grades K-5 are provided guides; self-guided or guided visits are available for grade 6 and higher. Visit pem.org/studenttours or call 978-542-1514.

SPECIAL EVENTS

Host your next event at PEM. Venues include exhibition galleries, historic buildings and gardens. Visit pem.org/event-rentals or call 978-542-1615.

MEMBERS GET MORE



Join Today!

Members get art, culture and access — plus these perks:

- Free admission all year, including Yin Yu Tang House
- Discounts at the Museum Shop and Café, plus programs
- Invitations to member-only events
- PEMperks — save at area businesses and restaurants
- Sponsor level and above members get reciprocal admission at 900+ museums across the country

There is a level for everyone!

Senior \$65	Sponsor \$210
Individual \$70	Patron \$400
Dual \$100	Benefactor \$675
Family \$110	

It's easy to join, simply stop by the admissions desk or visit pem.org/membership2019

You can apply the cost of your admission tickets to the price of your new membership.

Thank you for supporting PEM!

ON VIEW



Order of Imagination: The Photographs of Olivia Parker

Through November 11, 2019
Level 2 | 201



A Passion for American Art: Selections from the Carolyn and Peter Lynch Collection

Through December 1, 2019
Ground Level | 100



Hans Hofmann: The Nature of Abstraction

Through January 5, 2020 | Level 3 | 300

Hans Hofmann, *Indian Summer* (detail), 1959. Oil on canvas. University of California, Berkeley Art Museum and Pacific Film Archive; gift of the artist, 1965. © The Regents of the University of California. Photo by Jonathan Bloom. Image courtesy of the Renate, Hans and Maria Hofmann Trust/Artists Rights Society (ARS), New York.



A Lasting Memento: John Thomson's Photographs Along the River Min

Through May 17, 2020
Level 2 | 204



Where the Questions Live: An Exploration of Humans in Nature

Through March 7, 2021
Ground Level | 109

Kimsooja: Archive of Mind
Ground Level | 108

Powerful Figures
Ground Level | 114

Vanessa Platacis: Taking Place
Ground Level | 115, 116

Charles Sandison: Figurehead 2.0
Level 2 | 202

**The Creative Legacy of Nathaniel
Hawthorne: Selections from the
Phillips Library Collection**
Level 2 | 206

Yoan Capote: Immanence
Level 2 | 207

UPCOMING



Jacob Lawrence: The American Struggle

January 18–April 26, 2020

Jacob Lawrence, *We crossed the River at McKonkey's Ferry 9 miles above Trenton . . . the night was excessively severe . . . which the men bore without the least murmur . . .*—Tench Tilghman, December 27, 1776 (detail), panel 10, from *Struggle: From the History of the American People*, 1955. Egg tempera on hardboard. Collection of Harvey and Harvey-Ann Ross, © 2019 Jacob and Gwendolyn Knight Lawrence Foundation, Seattle/Artists Rights Society (ARS), New York.



Carlos Garaicoa: Partitura

March 2020–January 2021



Golden Prospects: California Gold Rush Daguerreotypes

April 4–July 12, 2020



Made It: The Women Who Revolutionized Fashion

May 16–September 7, 2020



Fiji: Art and Life In The Pacific

September 12, 2020–January 3, 2021

CONNECT WITH US!

Sign up to receive our monthly newsletter at pemb.org/enewsletter

Feel inspired? Have something to say? Share your thoughts.

[f](#) [ig](#) [tw](#) [v](#) #peabodyessex @peabodyessex

P | E | M Peabody
Essex
Museum

161 Essex St. | Salem, MA 01970 USA
978-745-9500, 866-745-1876
(TTY) 978-740-3649 | pemb.org